



**RAWLPLUG®**

Rainscreen & Cladding Brochure

Trust & Innovation

# Rainscreen Anchor Range for Masonry & Concrete

## R-KER-II

### Hybrid high performance vinylester resin

- R-KERII-345 Hybrid Vinylester Resin **Option 1** ETA approved resin system.
- Used in conjunction with the R-STUDS range (M8-M30). Variation of length and material finishes to suit substrate build up



## R-HPTII-A4

### Approved Throughbolt

- R-HPTII Throughbolts - **Option 1** Cracked Concrete Approved Throughbolt - Suitable for cracked & non-cracked concrete C20/25 - C50/60
- M8 - M20 Diameter lengths
- Available Finishes – Zinc Flake & A4-316 Stainless Steel



## R-FF1

### Nylon Frame Fixing

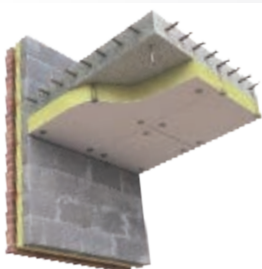
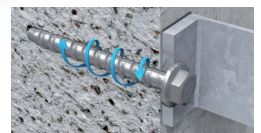
- FF1 Nylon Frame Fixings – ETA Approved Frame Fixing for Base materials A,B,C & D
- Multiple use in cracked concrete
- Available Finishes – Zinc Plate, Zinc Flake & A4-316 Stainless Steel
- Hex Flange & CSK Head Styles available



## R-LX-HF-ZF

### Zinc Flake Concrete Screws

- R-LX-HF **Option 1** Concrete Screw
- 6 Head Styles Available
- Zinc Flake Finish For High Corrosion Resistance 1200 Hours Salt Spray Resistance Classification C4
- Re-usable up to 5 times



## Soffit Slab Fixings

### MBA Fire - Resistant - Fixing - 40mm to 250mm Insulation Thickness

- Cover Caps to Suit
- Available 38 & 53 mm diameter



### WBT-61 Concrete Screws & Pok

- Spreader Washers - 40, 50 & 75mm
- 50 - 300mm Lengths



# Insulation Anchor Range for CP / Render Board & LSF



**WX-48T & WX-58T  
SELF-DRILLING SCREWS**

- 40mm – 300mm Lengths
- For LSF & Render Boards



**KCX TUBED WASHERS**

- Used in conjunction with WX Screws, for Optimal length arrangements



**GOK75 TUBED WASHERS**

- Used in conjunction with WX Screws, for optimal length arrangements
- 75mm Head diameter



**R-LS LARGE FLANGE  
SELF-DRILL SCREWS**

- For base rail fixing between 25mm – 100mm
- Steel up to 3.5mm & render board



**R-UCF-A2 STAINLESS SCREWS**

- For Timber & Board Material
- Lengths of 120m - 350m



**STAINLESS STEEL SPREADER  
WASHER**

- 70mm diameter
- For Use with R-UCF screws



**FX HAMMERFIX**

- For base track to solid masonry



**SCREWDRIVER  
& SDS DRILL BITS**

- Full range of Power Tool Accessories available



**RPP-FIX  
POLYURETHANE  
ADHESIVE**

- For bonding with EPS & XPS boards
- Full range of accessories available

# Insulation Anchors for Masonry Applications, New Build & Refurbishment



**Kooltherm® K15 Rainscreen Board**



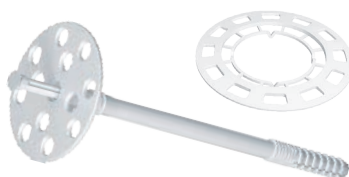
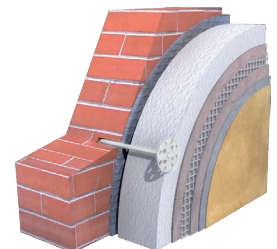
**KI-10 PLASTIC FIXING**

- 30-220mm Insulation thickness



**MBA - FIRE - RESISTANT FIXING**

- 40-250mm Insulation thickness



**KI-10 PLASTIC FIXING**

- 90mm Spreader plate for mineral wool 20-220mm insulation

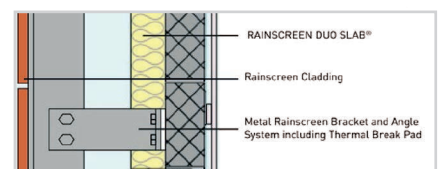


**MBA - FIRE - RESISTANT FIXING**

- 40-250mm Insulation thickness



**Rainscreen  
Duo Slab®**



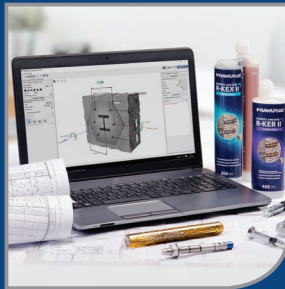
## CFA ACCREDITED ON-SITE TESTING

(Ultimate, suitability & proof)



## TECHNICAL HELPLINE & EASYFIX Software

Software



## TOOLBOX & BS 8539:2012 Training



- BS 8539:2012 will increase safe use of construction fixings
- Rawlplug support this development by offering the following:

- A vast range of safe ETA approved products
- Support Specifiers, Contractors & Installers
- Technical support with correct fixing selection
- Superior design software
- Large team of well trained engineers and technicians throughout the UK available for site consultations

## ZINC FLAKE COATING Advantages

- Non-electrolytically applied coating of zinc flakes
- Exceptionally thin layer
- Barrage protection from top coating
- Coating process does not cause hydrogen embrittlement
- 1200 hours salt spray resistance
- C4 category corrosion resistance
- Good efficiency in preventing bimetallic corrosion especially in contact with aluminium

CORROSION CATEGORY	EXAMPLES OF TYPICAL ENVIRONMENTS	
	EXTERIOR	INTERIOR
VERY LOW	-	Interior of air-conditioned premises with clean atmosphere (e.g. shops, offices, hotels)
LOW	Atmosphere with low pollution and dry climate; mainly rural areas	Unheated buildings where condensation may occur
AVERAGE	Residential and industrial atmosphere with moderate pollution of SO2. Coastal areas; low salinity atmosphere	Light industry with humidity and air pollution (Food production, laundry facilities, etc.)
HIGH	Industrial and coastal areas; medium salinity atmosphere	Chemical factories, swimming pools, offshore ships, etc.
VERY HIGH (industrial)	Industrial areas with highly-aggressive atmospheric conditions and high humidity	Buildings and areas with condensation of water and high pollution
VERY HIGH (marine)	Coastal and offshore areas with atmospheric conditions of high salinity	Buildings and areas with condensation of water and high pollution